

## Folding door system

- ▶ WingLine 770 / attached to the side
- ▶ All the benefits at a glance



### 3 benefits in 1 system.

Are you looking for a folding door system with a high load capacity and attractive design – and do you want it to be quickly installed? If so, WingLine 770 is the perfect system for you.

The door wings are quickly hooked in and aligned.

The running components easily clip into the runner profile. Quality that's felt in every movement.

Rated for door wing weights up to 20 kg – for plenty of design flexibility.



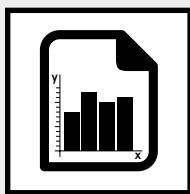
**Cushioned:** the Sensys concealed hinge even closes heavy doors gently and silently.



**Nifty:** the doors are easy to fit and remove. Shelves are rearranged in a tick.

# Folding door system

- ▶ WingLine 770 / attached to the side
- ▶ Summary



## Performance summary

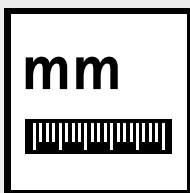
34 – 35

- ▶ Technical details in brief
- ▶ Door sizes
- ▶ Operating principle



## System components

36



## Planning dimensions

37



## Installation

38 – 39



## Accessories

76 – 85

# Folding door system

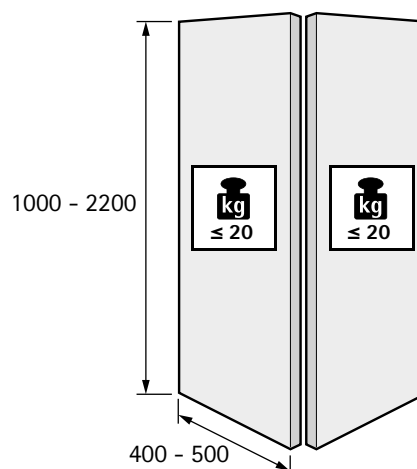
- ▶ WingLine 770 / attached to the side
- ▶ Performance summary



## Technical details in brief

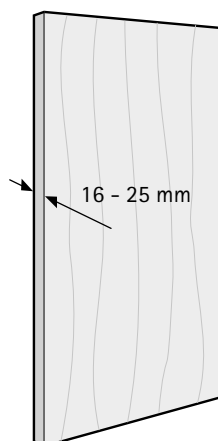
- ▶ For one folding door with 2 wings
- ▶ Overlay door position
- ▶ For wooden doors
- ▶ Suitable for use with Sensys hinge with Silent System
- ▶ Door wing weight up to 20 kg
- ▶ Door height up to 2200 mm
- ▶ Door wing width up to 500 mm
- ▶ With WingLine 26 as bottom guide
- ▶ Tested with 40000 cycles

## Door size and door weight

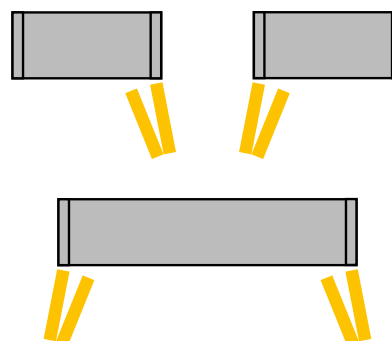


see pages 86 - 87

## Door material



## Number of door wings and door position

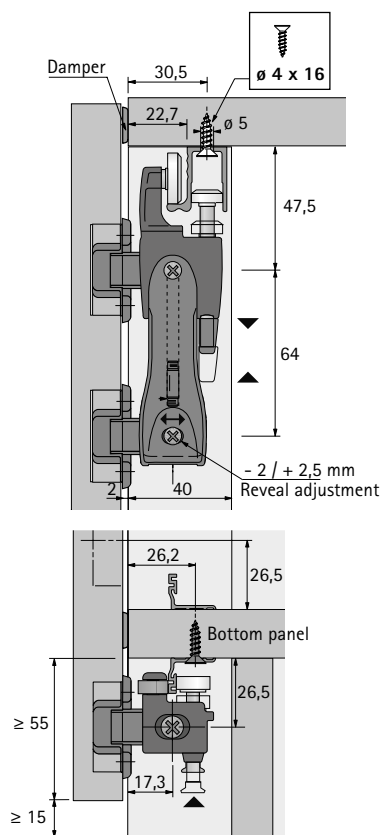


# Folding door system

- ▶ WingLine 770 / attached to the side
- ▶ Performance summary



## Operating principle



## Folding door system

- ▶ WingLine 770 / attached to the side
- ▶ System components



### WingLine 770 set



- ▶ Set contains all the parts required for 1 folding sliding door with 2 panels
- ▶ Running components and guide components with fast installation

Set comprises:

- ▶ 1 running component
- ▶ 1 guide component
- ▶ 4 folding door hinges, including drilling template

Advice:

- ▶ Please order profiles separately

Hinge side of cabinet	Order no.	PU
left	<b>0 070 968</b>	1 set
right	<b>0 070 969</b>	1 set

### Drilling template for folding door hinge



- ▶ For setting 2 mm and 5 mm reveals
- ▶ Plastic

Order no.	PU
<b>1 079 491</b>	150 ea.

### Runner profile



- ▶ For screwing on
- ▶ Length 2000 mm
- ▶ Aluminium, bright

Order no.	PU
<b>1 079 089</b>	4 ea.

### Guide profile



- ▶ For screwing on, screw on positions predrilled
- ▶ Length 2000 mm
- ▶ Aluminium, silver anodized

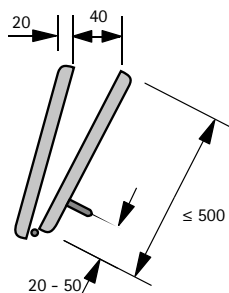
Order no.	PU
<b>0 072 919</b>	4 ea.

# Folding door system

- ▶ WingLine 770 / attached to the side / load capacity 20 kg
- ▶ Planning dimensions

## Installation dimensions for WingLine 770

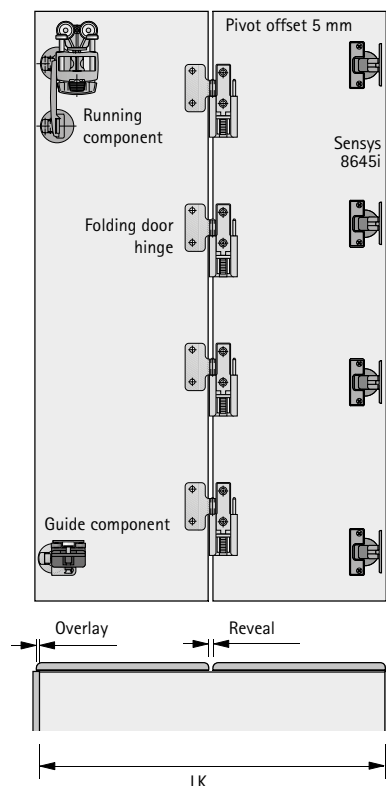
### 2-wing door set



### 2-wing folding door

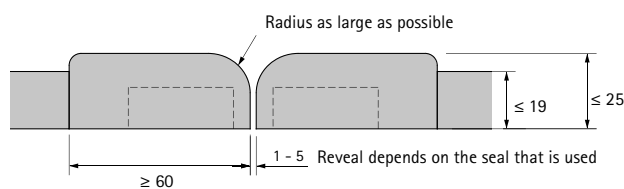
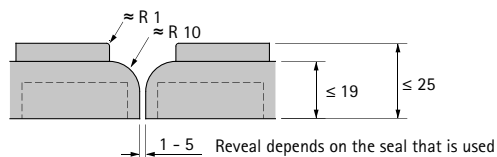
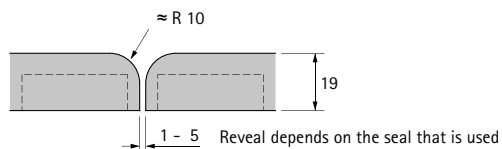
Door width 1000 mm max.  
Door weight / wing 20 kg max.  
Door wing height 2200 mm max.

### Folding door with 2 wings

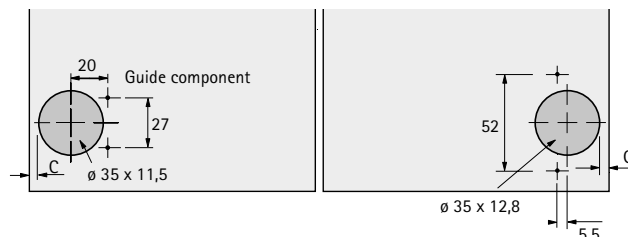
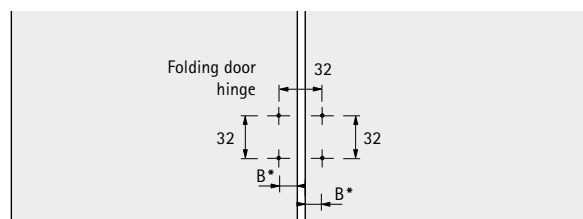
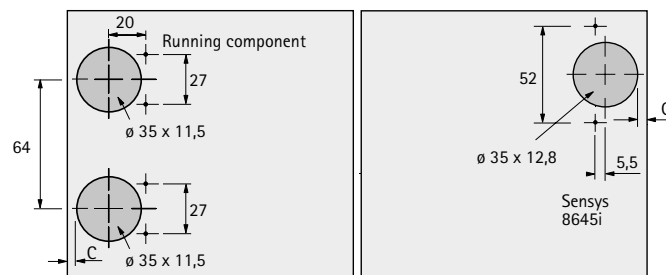


* Drill hole spacing	13,5	14	14,5	15	15,5
Reveal mm	5	4	3	2	1

### Door wing contours and reveals (as finger protection)



### Drilling patterns



### Calculation of door width / door wing width

Door width = inside carcase width + (2 x overlay\*)  
Door wing width = (inside carcase width - 1 x reveal + 2 x overlay\*) ÷ 2

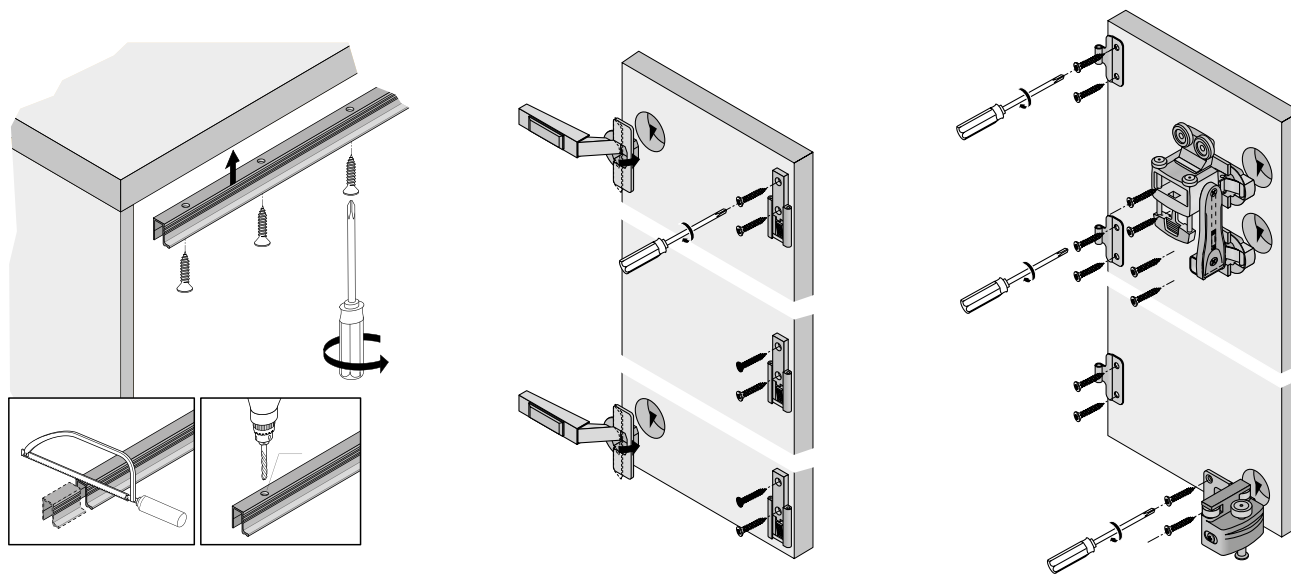
\* Overlay: max. 15 mm, C dimension 5 mm

Hinges / mounting plates should be ordered separately – see concealed hinges

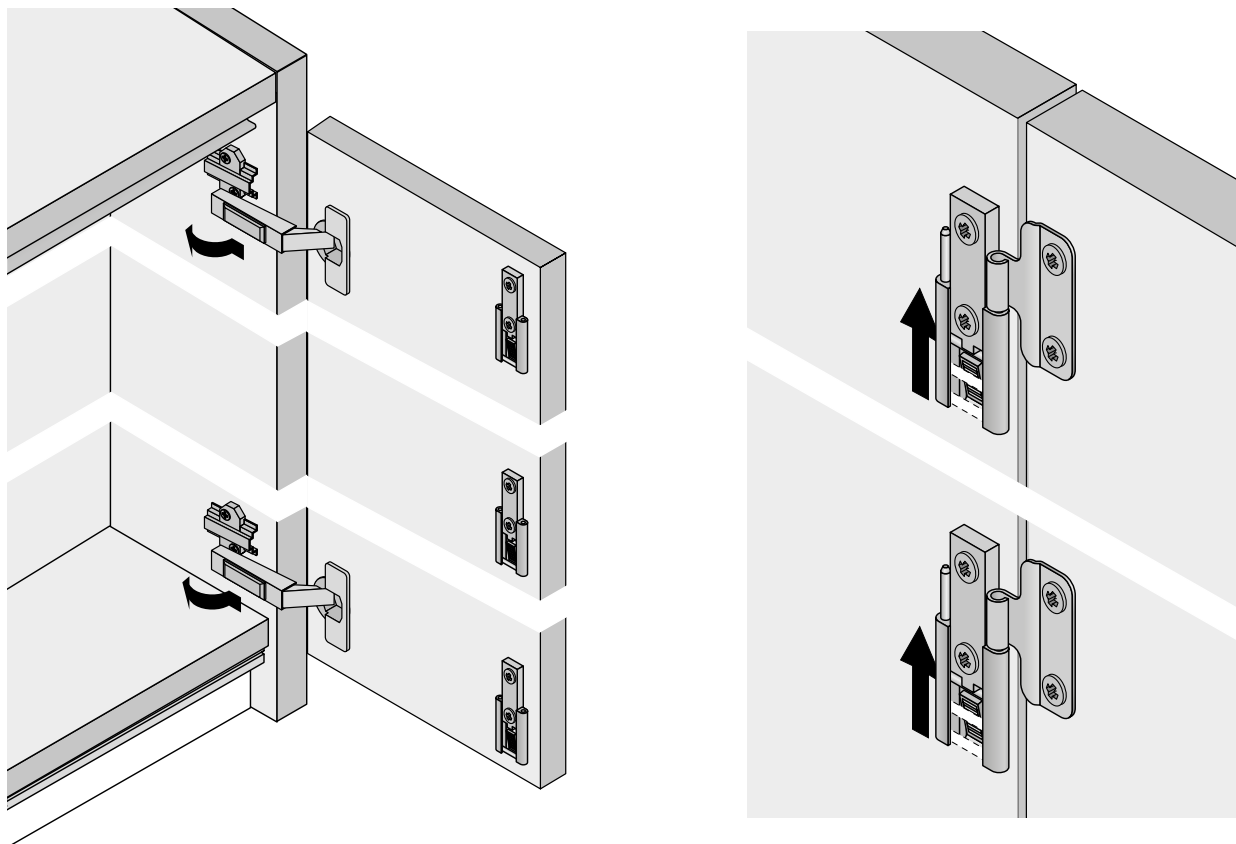
## Folding door system

- ▶ WingLine 770 / attached to the side / load capacity 20 kg
- ▶ Installation

### Installing runner profile / preparing door set



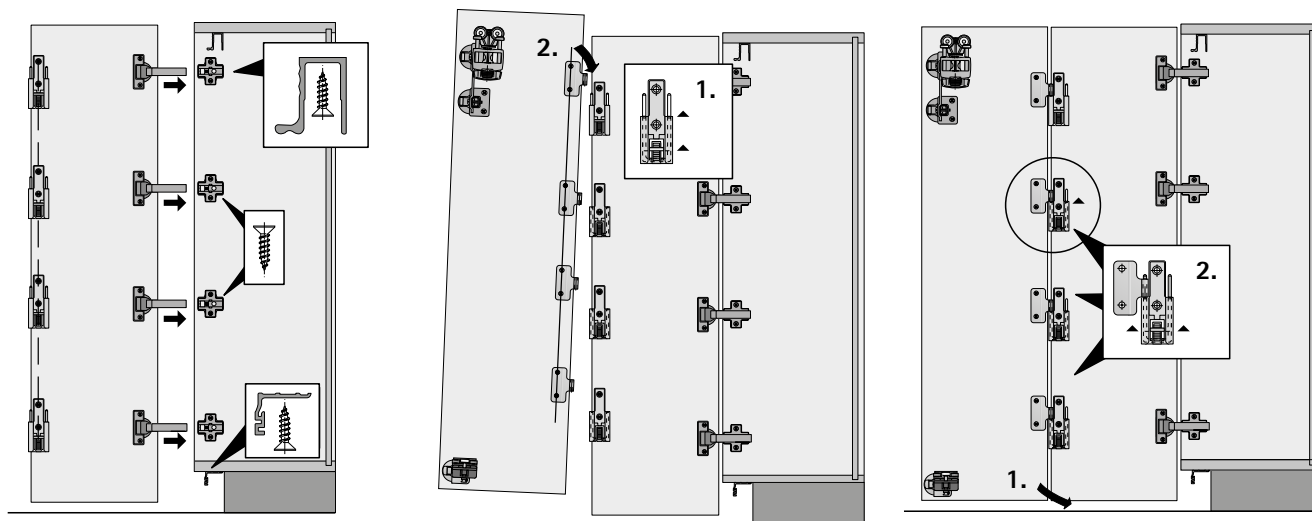
### Installing door set



## Folding door system

- ▶ WingLine 770 / attached to the side / load capacity 20 kg
- ▶ Installation

### Process for installing door set



### Installing running and guide components

